



the ★★★★★  
desire  
to live beyond ordinary...

HIMALAYA ★★★★★  
elanza  
an extra ordinary living spaces



Himalaya Group is one of the reputed and well known Real estate group in Gujarat. In a span of two decades, it has made a mark for itself in the Real estate industry in Gujarat. It is currently present in 4 cities namely Ahmedabad, Bhavnagar, Anand and Mehsana. The group specializes in medium and large scale residential and commercial building construction. Himalaya Group has given landmarks like Himalaya Mall, Himalaya Arcade in Ahmedabad and Himalaya Mall, Himalaya Square in Bhavnagar.

Life in its truest sense finds its meaning when lived beyond the ordinary. At HIMALAYA Group, we understand this human desire. Our earnest attempt to help you realize it manifests in form of HIMALAYA ELANZA - A superior abode where life is lived at its premium best. It's where you discover homes that span beyond BHKs. An address where your desire to live beyond ordinary is not just a dream, but a way of life.

HIMALAYA ★★★★★  
**elanza**  
an extraordinary living spaces



Welcome to Himalaya Elanza. Himalaya Group launches a new experiential living concept. A designer high-rise which is an epitome of luxury, comfort & peace.

Experience the  
**luxury**  
as it will be loaded with ultra modern amenities.

Experience the  
**comfort**  
as connected with BRTS, Railway, Airport, GSRTC and upcoming Metro.

Experience the  
**peace**  
as it is near by Heritage Zone and surrounded by lush green open space.



the **desire** to live **beyond** dreams...

Every individual desires to live in a larger than life space. At Himalaya Elanza, your desire is a command. From living space to recreational, parking to rejuvenation, children's space to health space & we ensure that no space is beyond your reach. With space for yourself and family, life at Himalaya Elanza is a fulfilling experience.

Luxury

- Gated Community with exquisite landscaping.
- 24 x 7 Security with the intercom facility and video door phone.
- Swimming pool, Open Air theater, Badminton Court and Net Cricket.
- Exclusive Children's play area.
- Drop off and pick up zone for school Children.
- Beautifully Landscaped Garden with Lotus Pound and pleasant sit outs.
- 2 Nos. of Ultra Modern Automatic Lifts of standard company.
- Generator power back up for common amenities.
- Ample space for parking.

HIMALAYA ★★★★★  
**elanza**  
an extra ordinary living spaces





the desire to live in the best location...

Nothing compliments a luxurious life than a higher order address. Himalaya Elanza located in the best residential address of 132' Ring Road, Ahmedabad, redefines living in its truest sense. With prominent Schools, University, Airport, Sabarmati Railway Station, Sabarmati Riverfront, State Transport Bus Terminal, Malls, Hotels and Social Hubs in near vicinity, life is almost centered around you.

## Comfort

At the Junction of 132 ft Ring Road,  
Ashram Road, Sabarmati & Shahibaugh.

- 0 M. BRTS Starting Point Of Ahmedabad (Connects Entire City)
- 200 M. GSRTC Depot
- 300 M. Metro Project Junction (North South Corridor - Motera to APMC - Varana) (Under work)
- 500 M. Sabarmati River Front (Located on Ashram Road)
- 800 M. Gandhi Ashram
- 1 Km. Sabarmati Railway Station
- 5 Kms. SVP International Airport
- 7 Kms. Kalupur Railway Station

HIMALAYA ★★★★★  
**elanza**  
an extra ordinary living spaces







the **desire** to live beyond expectations...

Peace

At Himalaya Elanza, you can experience the peace as being surrounded by lush green open space. Also a world famous Gandhi Ashram, which is a Heritage Zone near by, restricts any further construction activity. Evening walks at Sabarmati River Front allows nature energy to flow in to you.

HIMALAYA ★★★★★  
**elanza**  
an extra ordinary living spaces

BIRD'S EYE VIEW - ACTUAL PHOTOS





the desire to live beyond just another address...

Created with unmatched quality standard. A contemporary architectural style keeping all tastes in mind. Everything for everyone. Loaded with amenities that are rare to see and gives you an opportunity to 'live your life, your way'.

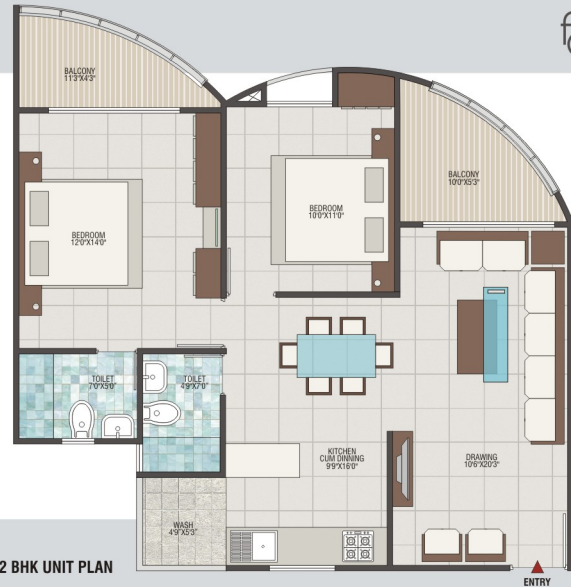
This new apartment promises an enviable lifestyle features in an unmatched atmosphere. If you are a perfectionist then you are sure to find that even the minutest details have been taken care of, while designing these apartment.

elanza <sup>HIMALAYA ★★★★★</sup>  
an extraordinary living spaces













## specifications

### • Drawing Room / Dining Room

800 mm x 800 mm Vitrified tiles

Walls and ceiling - single mala plaster with wall putty.

Decorative Main entrance door with SS finish handle lock and video door phone.

### • Bedroom

Wooden flooring in master bedroom.

600 mm x 600 mm Vitrified tiles in all other bedrooms.

Walls and ceiling - single mala plaster with wall putty.

Flush doors with both side paint and SS finish handle locks.

### • Kitchen

Aquaguard Total RO water purification system of Eureka Forbes.

Mirror polish granite kitchen platform.

Ceramic tiles full height dado on kitchen platform with stainless steel sink.

### • Toilets

Table top counter basin in master bedroom.

Designer tiles on floor and full height tiles dado on walls.

Jaquar bathroom fittings.

Cera or equivalent sanitary ware.

### • Windows

Anodized aluminum sliding windows with stone sill.

### • Electrical Work

Branded modular switches.

Concealed copper wiring with adequate number of points in all rooms.

TV points in all rooms.

MCB distribution panel

HIMALAYA ★★★★★  
**elanza**  
an extra ordinary living spaces



## FEW PROJECTS OF HIMALAYA GROUP

### • COMPLETED PROJECTS

Himalaya Mall - Drive In Road, Ahmedabad  
 Hotel Ginger (Taj Group) - Himalaya Mall, Ahmedabad  
 Himalaya Arcade - Shops & Offices - Vastrapur, Ahmedabad  
 Himganga Apartments - Subhash Chawh, Ahmedabad  
 Harvy Complex - Shops & Offices - Subhash Chawh, Ahmedabad  
 Hilton Residency - Bungalows - Prahladnagar, Ahmedabad  
 Himalaya Greens - 2 & 3 BHK Apt. - Naroda, Ahmedabad  
 Himalaya Square - Shops & Offices - Naroda, Ahmedabad  
 Himadri Apartment - Bodakdev, Ahmedabad  
 Hermitage Villa Bungalows - Ambli, Ahmedabad  
 Himalaya Exotica - Shopping Mall - Vadaj, Ahmedabad  
 & Many More

### • CURRENT PROJECTS :

Himalaya Calista - High End Lifestyle Apt. - Paldi, Ahmedabad  
 Himalaya Oasis - High End Lifestyle Apt. - Jodhpur, Ahmedabad  
 Himalaya Emerald - Shops & Offices - Satellite, Ahmedabad  
 Himalaya Zircon - 2 & 3 BHK Apt. - Motera, Ahmedabad  
 Himalaya Skyz - 2, 3, 4, 5 BHK Apt. - Bhavnagar  
 Himalaya Square - Commerical Complex - Bhavnagar  
 Himalaya Mall - Bhavnagar  
 Himalaya Retreat - Bungalows - Anand  
 Himalaya Heights - 2 & 3 BHK Apt. - Anand  
 Himalaya Royal - 1, 2 & 3 BHK Apt. - Mehsana  
 Himalaya Villa - Bungalows - Mehsana  
 Himalaya Mall - Mehsana

### • FUTURE PROJECTS :

Himalaya Classic - Township Project - Nikol, Ahmedabad  
 Himalaya Ambrosia - High End Lifestyle Apt. - Anand  
 Himalaya Promenade - Hotel & Banquet - Anand



Himalaya Mall - Drive-In, Ahmedabad



Himalaya Calista - Paldi, Ahmedabad



Himalaya Oasis - Jodhpur, Ahmedabad



Hermitage Villa - Ambali, Ahmedabad



Himalaya Emerald - Satellite, Ahmedabad



Himalaya Royal - Mehsana



Himalaya Retreat - Anand



Himalaya SKYZ - Bhavnagar



Himalaya Exotica - Wadaj, Ahmedabad



Himalaya Mall - Bhavnagar



Himalaya Square - Naroda, Ahmedabad



#### Disclaimer :

- (1) The developers reserve the right to change or revise or make any modifications, additions, omissions or alterations in the scheme as a whole or any part thereof or any details therein, at their sole discretion without any prior notice, such changes would be binding to all the members.
- (2) All the architectural and interior views in brochure are computer graphics simulated interpretation of the actual property.
- (3) All the dimensions given are approximate & from unfinished surfaces.
- (4) This brochure is just for an easy presentation of the project and should not be treated as a legal document.

हिमालया

THIS PROJECT IS FUNDED BY

TATA CAPITAL  
HOUSING FINANCE LIMITED

HIMALAYA \*\*\*\*\*  
elanza  
an extra ordinary living spaces

Site Office :  
**HIMALAYA ELANZA**  
 RTO Circle, Behind Collector office,  
 132 ft. Ring Road, Ahmedabad - 27  
 Contact : +91 8238008161 - 7567077961

Web site : [www.himalayaconstructions.com](http://www.himalayaconstructions.com)  
 E-mail : [sales@himalayamall.net](mailto:sales@himalayamall.net)  
[www.facebook.com/himalayabuildcon](http://www.facebook.com/himalayabuildcon)

Developer  
**Himalaya Elanza Pvt. Ltd.**  
 B 412, Himalaya Arcade,  
 Opp. Vastrapur Lake, Ahraedabad, Gujarat, India

Architect :  
**ARCHITECT RUSHIKESH H.**  
 Mumbai

Legal Advisor  
**IDRISH BENIGALI**  
 & Associates

Project Advisor  
**ANIKET DARSHAN SHAH**  
 & Associates

brochure design @ origyn inc. - 98 68020984